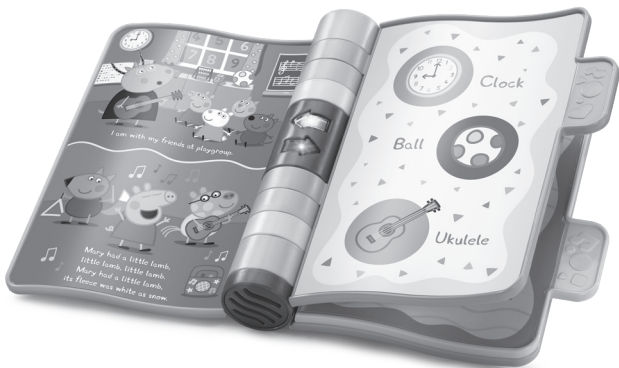


vtech®

# Instruction Manual

# Peppa Pig™

## Peppa's Nursery Rhymes



Licensed by:



**VTech understands that a child's needs and abilities change as they grow and with that in mind we develop our toys to teach and entertain at just the right level...**

## **vtech** Baby

**Toys that will stimulate their interest in different textures, sounds and colours**

### **I am...**

...responding to colours, sounds and textures

...understanding cause and effect

...learning to touch, reach, grasp, sit-up, crawl and toddle

*Birth-36 months*



## **Pre-School**

**Interactive toys to develop their imagination and encourage language development**

### **I want...**

...to get ready for school by starting to learn the alphabet and counting

...my learning to be as fun, easy and exciting as can be

...to show my creativity with drawing and music so my whole brain develops

*3-6 years*



## **Electronic Learning Computers**

**Cool, aspirational and inspiring computers for curriculum related learning**

### **I need...**

...challenging activities that can keep pace with my growing mind

...intelligent technology that adapts to my level of learning

...National Curriculum based content to support what I'm learning at school

*4-10 years*

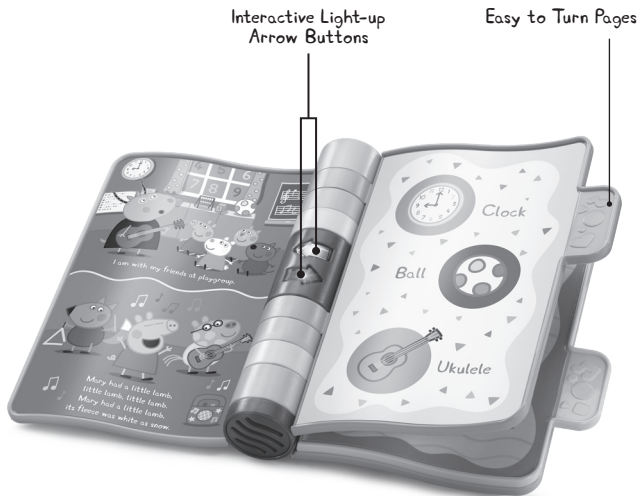


To learn more about this and other VTech® products, visit [www.vtech.co.uk](http://www.vtech.co.uk)

# INTRODUCTION

Thank you for purchasing Peppa's Nursery Rhymes.

Read along and sing songs with Peppa Pig as she recites popular nursery rhymes. This electronic storybook is an exciting page-turner with sturdy tabs and colourful, interactive pages that little ones will love to explore.



# INCLUDED IN THE PACKAGE

- Peppa's Nursery Rhymes
- Quick Start Guide

## WARNING

All packing materials such as tape, plastic sheets, packaging locks, removable tags, cable ties, cords and packaging screws are not part of this toy, and should be discarded for your child's safety.

## NOTE

Please save this Instruction Manual as it contains important information.

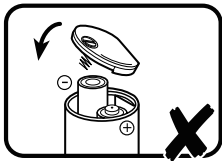
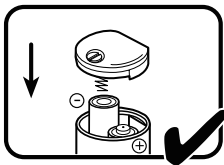
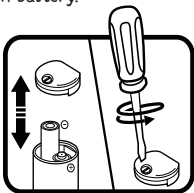
# INSTRUCTIONS

## WARNING:

Adult assembly required for battery installation.  
Keep batteries out of reach of children.

## BATTERY REMOVAL AND INSTALLATION

1. Make sure the unit is turned **OFF**.
2. Find the battery cover located on the top of the spine. Use a screwdriver to loosen the screw and then open the battery cover.
3. Remove old batteries by pulling up on one end of each battery.
4. Install 2 new AAA (AM-4/LR03) batteries following the diagram inside the battery box. (For best performance, alkaline batteries or fully charged Ni-MH rechargeable batteries are recommended.)
5. Replace the battery cover and tighten the screw to secure.



## **IMPORTANT: BATTERY INFORMATION**

- Insert batteries with the correct polarity (+ and -).
- Do not mix old and new batteries.
- Do not mix alkaline, standard (carbon-zinc) or rechargeable batteries.
- Only batteries of the same or equivalent type as recommended are to be used.
- Do not short-circuit the supply terminals.
- Remove batteries during long periods of non-use.
- Remove exhausted batteries from the toy.
- Dispose of batteries safely. Do not dispose of batteries in fire.

### **RECHARGEABLE BATTERIES:**

- Remove rechargeable batteries (if removable) from toy before charging.
- Rechargeable batteries are only to be charged under adult supervision.
- Do not charge non-rechargeable batteries.

## Disposal of batteries and product



The crossed-out wheellie bin symbols on products and batteries, or on their respective packaging, indicates they must not be disposed of in domestic waste as they contain substances that can be damaging to the environment and human health.



The chemical symbols Hg, Cd or Pb, where marked, indicate that the battery contains more than the specified value of mercury (Hg), cadmium (Cd) or lead (Pb) set out in the Batteries and Accumulators Regulation.

The solid bar indicates that the product was placed on the market after 13th August, 2005.

Please dispose of your product and batteries responsibly.

In the UK, give this toy a second life by disposing of it at a small electricals collection point\* so all of its materials can be recycled.

Learn more at:

[www.vtech.co.uk/recycle](http://www.vtech.co.uk/recycle)

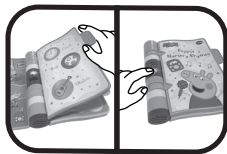
[www.vtech.com.au/sustainability](http://www.vtech.com.au/sustainability)

\* Visit [www.recyclenow.com](http://www.recyclenow.com) to see a list of collection points near you.

## PRODUCT FEATURES

### 1. On/Off Control

To turn the unit **On**, turn the **Pages** or press the **Interactive Light-up Arrow Buttons** (➡). To turn the unit **Off**, close the book.



### 2. Automatic Shut-Off

To preserve battery life, **Peppa's Nursery Rhymes** will automatically switch off after approximately 25 seconds without input. The unit can be turned **On** again by pressing the **Interactive Light-up Arrow Buttons** or turning the **Pages**.

## NOTE

If the unit switches off or if the light fades out during play, please install a new set of batteries.

# ACTIVITIES

## 1. Interactive Light-up Arrow Button

Press the **Interactive Light-up Arrow Buttons** to hear a song, melody, phrase, fun sounds or short tune. The lights will flash with the sounds.



## 2. Turning Book Pages

Turn the **Pages** to hear a short tune and a sentence corresponding to the images on the pages. Close the book to hear a fun phrase. The lights will flash with the sounds.



# MELODIES

1. Hickory Dickory Dock
2. Bingo
3. Glow Worm
4. Itsy Bitsy Spider
5. The Wheels on the Bus
6. Hey Diddle Diddle
7. Twinkle Twinkle Little Star
8. London Bridge
9. Muffin Man
10. Oh Where Has My Little Dog Gone

11. Here We Go Round the Mulberry Bush
12. Are You Sleeping
13. Diddle, Diddle Dumpling
14. A-Tisket, A-Tasket
15. Polly Put the Kettle On

## SONG LYRICS

### Song "Mary Had A Little Lamb"

Mary had a little lamb, little lamb, little lamb.

Mary had a little lamb, its fleece was white as snow.

### Song "Once I Caught A Fish Alive"

One, two, three, four, five, Once I caught a fish alive.

Six, seven, eight, nine, ten, then I let it go again.

### Song "Fruit"

Berries, cherries, bananas and apples too,

Fruit is tasty and it's so good for you.

## CARE & MAINTENANCE

1. Keep the unit clean by wiping it with a slightly damp cloth.
2. Keep the unit out of direct sunlight and away from any direct heat sources.
3. Remove the batteries if the unit will not be in use for an extended period of time.
4. Do not drop the unit on hard surfaces and do not expose the unit to moisture or water.



# TROUBLESHOOTING

If for some reason the unit stops working or malfunctions, please follow these steps:

1. Turn the unit Off.
2. Interrupt the power supply by removing the batteries.
3. Let the unit stand for a few minutes, then replace the batteries.
4. Turn the unit On. The unit should now be ready to use again.
5. If the unit still does not work, install a new set of batteries.

If the problem persists, please contact our Consumer Services Department and a service representative will be happy to help you.

# CONSUMER SERVICES

Creating and developing VTech products is accompanied by a responsibility that we at VTech® take very seriously. We make every effort to ensure the accuracy of the information, which forms the value of our products. However, errors sometimes can occur. It is important for you to know that we stand behind our products and encourage you to call our Consumer Services Department with any problems and/or suggestions that you might have. A service representative will be happy to help you.

## **UK Customers:**

Phone: 0330 678 0149 (from UK) or +44 330 678 0149 (outside UK)

Website: [www.vtech.co.uk/support](http://www.vtech.co.uk/support)

## **Australian Customers:**

Phone: 1800 862 155

Website: [support.vtech.com.au](http://support.vtech.com.au)

## **NZ Customers:**

Phone: 0800 400 785

Website: [support.vtech.com.au](http://support.vtech.com.au)

# PRODUCT WARRANTY/ CONSUMER GUARANTEES

## **UK Customers:**

Read our complete warranty policy online at [vtech.co.uk/warranty](http://vtech.co.uk/warranty).

## **Australian Customers:**

## **VTECH ELECTRONICS (AUSTRALIA) PTY LIMITED & CONSUMER GUARANTEES**

Under the Australian Consumer Law, a number of consumer guarantees apply to goods and services supplied by VTech Electronics (Australia) Pty Limited. Please refer to [vtech.com.au/consumerguarantees](http://vtech.com.au/consumerguarantees) for further information.

Visit our website for more  
information about our products,  
downloads, resources and more.

[www.vtech.co.uk](http://www.vtech.co.uk)  
[www.vtech.com.au](http://www.vtech.com.au)



HASBRO and PEPPA PIG and all related trademarks  
and characters TM & © 2024 Hasbro/Hasbro  
Consumer Products Licensing Ltd. Peppa Pig © 2003  
Astley Baker Davies Ltd. and HCPL Ltd. All Rights  
Reserved. Used with Permission.

© 2024 VTech Holdings Limited.  
All rights reserved.  
IM-551900-001  
Version:0